



RIFLESCOPES | RED DOTS | RANGEFINDERS | BINOCULARS | SPOTTING SCOPES

WELCOME

Thank you for choosing Vortex Optics. We respect people like you, people who appreciate meticulously designed, precision-engineered optics.

Some of you are hunters, some of you are expert marksmen, and some of you are both. If you're looking for hunting optics, you'll find them in this half of the book. Flip to the other side if you're looking for tactical optics.

We are here to answer any questions you may have and look forward to personally welcoming you to the Vortex Nation.



VIP WARRANTY

OUR UNCONDITIONAL PROMISE TO YOU.

Vortex will repair or replace the product.
Absolutely free—no matter the cause.

- » Unlimited
- » Unconditional
- » Lifetime Warranty

www.VortexOptics.com • (800) 426-0048
2120 West Greenview Drive, Middleton, WI USA 53562

NOTE: The VIP Warranty does not cover loss, theft, deliberate damage or cosmetic damage that does not hinder the performance of the product.

RAZOR[®] HD LH[™]

LIGHT HUNTER RIFLESCOPES

Top-tier glass and precision machining in an ultra-sleek, lightweight package define the Razor[®] HD LH[™]. Simple, yet elegant, this riflescope is built to exceed expectations—no matter the person or extreme hunts they take it on.

HD (High Density) extra-low dispersion glass, XR Plus premium fully multi-coated lenses and ArmorTek[®] on exterior lenses combine to deliver stunning image quality. Tack-sharp resolution from edge to edge, coupled with its ultra-forgiving eyepiece, serves up a sight picture nothing short of impressive.

The HSR-4 BDC and G4-BDC reticles are super clean, yet highly versatile, for optimal target acquisition and pinpoint accuracy.



▶ ARGON GAS PURGED

▶ PRECISION-GLIDE ERECTOR SYSTEM

This system ensures the components in the zoom lens mechanism glide smoothly and cleanly through all magnification ranges.



▶ XR[™] PLUS

Fully multi-coated lenses deliver the highest level of light transmission for maximum brightness.



▶ HD (HIGH DENSITY)

Premium extra-low dispersion glass delivers the ultimate in resolution and color fidelity, resulting in high-definition images.



▶ ARMORTEK[®]

Protects the exterior lenses from scratches, oil, and dirt.



▶ SHOCKPROOF

SKU	MAGNIFICATION X OBJECTIVE LENS	RETICLE OPTIONS	WEIGHT	LENGTH	EYE RELIEF (MAX POWER)	FIELD OF VIEW @ 100 YARDS	TUBE SIZE	TURRET STYLE
RZR-1589	3-15 x 42	G4 BDC MOA	16.5 oz	13.5"	3.8"	35.8 - 7.1'	1"	Capped
RZR-1572		HSR-4 MOA						
RZR-1565	2-10 x 40	G4 BDC MOA	15.4 oz	12.5"	3.8"	56.2 - 10.8'	1"	
RZR-1558		HSR-4 MOA						
RZR-6638	1.5-8 x 32	G4 BDC MOA	13.4 oz	11.0"	3.8"	72.2 - 13.2'	1"	

Dual Use: Shooting Tactical / Hunting

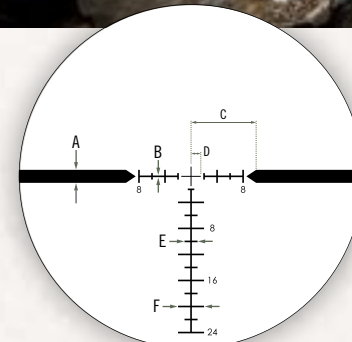


VISIT: www.VortexOptics.com or page 47 for more detailed information.



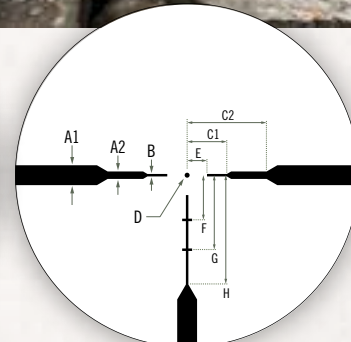
FOR ALL THOSE ONCE IN A LIFETIME MOMENTS

HSR-4: The ideal reticle for those who want enough information to utilize personalized ballistics, but prefer a clean look. A fine crosshair, coupled with MOA-based hash-marks (2 MOA spacing), promotes fast and accurate shots from close to extended ranges.



HSR-4 RETICLE

RETICLE SUBTENSIONS	A	B	C	D	E	F
3-15 x 42	1.5	.20	10.0	1.5	2.0	4.0
2-10 x 40	2.0	.25				



G4 BDC MOA RETICLE

G4 BDC MOA: Combining a target dot for pinpoint aiming, BDC hash-marks for longer range shots, and hints of the classic German Number 4, the new G4 BDC is the perfect blend of features and functionality. Slightly heavier sub-tensions make it easy to pick up in low light conditions. Simple, versatile, effective—that's the G4 BDC.

RETICLE SUBTENSIONS	A1	A2	B	C1	C2	D	E	F	G	H
3-15 x 42	1.5	.5	.175			.35				
2-10 x 40	2.0	.75	.25	4.0	8.0	.50	2.0	4.5	7.5	11.0
1.5-8 x 32	2.5	.95	.30			.625				

NOTE: Reticle images shown for representation only. Reticle image varies between scope models depending on magnification and reticle plane. The letters on the reticle images refer to the subtensions in the chart.

VIPER[®] HSLR[™] & HS[™]

HUNTING SHOOTING AND LONG-RANGE RIFLESCOPES

Want to extend your effective shooting range at distances where bullet drop and wind drift become critical? Take a look at this series of Viper[®] scopes. HSLR[™] riflescopes feature exposed tactical elevation turrets built for dialing shots at extended ranges, while low-profile, capped windage turrets maintain the scopes' sleek lines. The HS[™] comes well-equipped with generous eye relief, high-quality extra-low dispersion glass and an advanced optical system with 4x zoom range for easy target acquisition and clear view.

Choose either of these models to guarantee that when the moment of truth arrives, you can take full advantage of the opportunity.

► **MAG-VIEW FIBER OPTIC**
Provides a highly visible reference point for the magnification setting.

► **PRECISION-FORCE SPRING SYSTEM**
Premium-quality components in the erector-spring system ensure maximum repeatability and ease of adjustment.



► **SHOCKPROOF**



► **XR[™]**
Fully multi-coated lenses deliver the highest level of light transmission for maximum brightness.



► **XD[™]**
Extra-low dispersion glass increases resolution and color fidelity, resulting in crisper, sharper images.



► **ARMORTEK[®]**
Protects the exterior lenses from scratches, oil, and dirt.

► **PRECISION-GLIDE ERECTOR SYSTEM**
This system ensures the components in the zoom lens mechanism glide smoothly and cleanly through all magnification ranges.



► **ARGON GAS PURGED**

► **CRS[™] ZERO STOP**
Customizable Rotational Stop (CRS) on HSLR models aids in return to zero after dialing temporary elevation correction.

SKU	MAGNIFICATION X OBJECTIVE LENS	RETICLE OPTIONS	WEIGHT	LENGTH	EYE RELIEF (MAX POWER)	FIELD OF VIEW @ 100 YARDS	TUBE SIZE	TURRET STYLE
Viper HSLR								
VHS-4315-LR	6-24 x 50 FFP	XLR MOA	22.4 oz	15.5"	4.0"	17.8 - 5.1'	30mm	Capped Windage Tactical Elevation
VHS-4307-LR	4-16 x 50	Dead-Hold BDC	21.4 oz	13.7"		27.4 - 7.4'		
Viper HS								
VHS-4307	4-16 x 50	Dead-Hold BDC	20.4 oz	13.7"	4.0"	27.4 - 7.4'	30mm	Capped
VHS-4305	4-16 x 44		18.4 oz					
VHS-4303	2.5-10 x 44		16.5 oz	12.0"		47.0 - 10.9'		

Dual Use: Shooting Tactical / Hunting

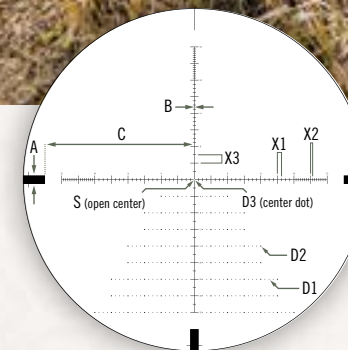
VISIT: www.VortexOptics.com or page 48 for more detailed information.

US Patent 7,937,879



DRIVING TACKS TO DROPPING RACKS
THESE RIFLESCOPES DO BOTH

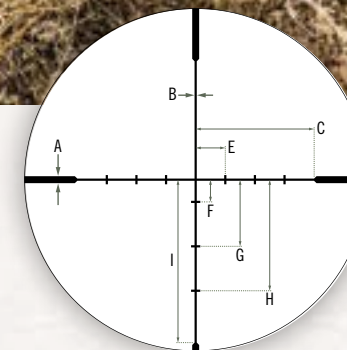
XLR MOA: A hash-mark based, long range reticle with wind drift dots and 1 MOA wind reference subtensions. Good for long-range shooters dialing for bullet drop and holdover.



XLR MOA RETICLE

RETICLE SUBTENSIONS	XLR MOA									
	A	B	C	D1	D2	D3	S	X1	X2	X3
6-24 x 50 FFP	2.08	.1	36.0	.17	.26	.1	.3	1	.5	2

NOTE: Reticle images shown for representation only. Reticle image varies between scope models depending on magnification and reticle plane. The letters on the reticle images refer to the subtensions in the chart.



DEAD-HOLD[®] BDC RETICLE

RETICLE SUBTENSIONS	DEAD-HOLD BDC MOA							
	A	B	C	E	F	G	H	I
4-16 x 50	.469	.156	8.0	2.0	1.5	4.5	7.5	11.0
4-16 x 44								
2.5-10 x 44	.75	.25						



VIPER[®]

RIFLESCOPES

Designed and engineered for those who want it all—strength, durability, and fully multi-coated lenses for incredible light transmission. This is why year after year, accomplished hunters have come to rely on this solid performer. Just pick your reticle and a spot behind the shoulder. Done.



► **XD™**
Extra-low dispersion glass increases resolution and color fidelity, resulting in crisper, sharper images.

► **PRECISION-FORCE SPRING SYSTEM**
Premium-quality components in the erector-spring system ensure maximum repeatability and ease of adjustment.



► **SHOCKPROOF**



► **XR™**
Fully multi-coated lenses deliver the highest level of light transmission for maximum brightness.



► **ARGON GAS PURGED**

► **PRECISION-GLIDE ERECTOR SYSTEM**
This system ensures the components in the zoom lens mechanism glide smoothly and cleanly through all magnification ranges.



► **ARMORTEK®**
Protects the exterior lenses from scratches, oil, and dirt.

SKU	MAGNIFICATION X OBJECTIVE LENS	RETICLE OPTIONS	WEIGHT	LENGTH	EYE RELIEF (MAX POWER)	FIELD OF VIEW @ 100 YARDS	TUBE SIZE	TURRET STYLE
VPR-M-06MD	6.5-20 x 50 PA	Mil-Dot	21.6 oz	14.4"	3.1"	17.4 - 6.2'	30mm	Tall Capped
VPR-M-06BDC		Dead-Hold BDC						

Dual Use: Shooting Tactical / Hunting

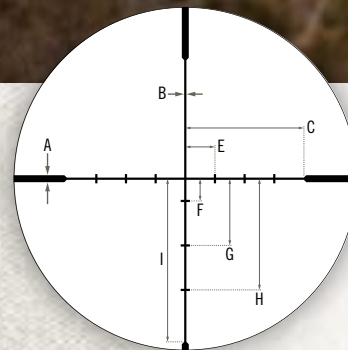
US Patent 7,937,879



VISIT: www.VortexOptics.com or page 48 for more detailed information.



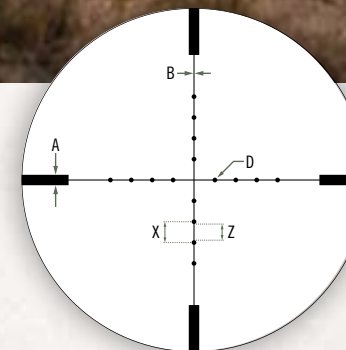
ALWAYS READY SUNRISE TO SUNSET



DEAD-HOLD® BDC RETICLE

DEAD-HOLD® BDC: A customized hash-mark design which helps eliminate the guesswork on holdover and windage corrections. This reticle is perfect for hunting and shooting at varying ranges.

RETICLE SUBTENSIONS	DEAD-HOLD BDC MOA							
	A	B	C	E	F	G	H	I
6.5-20 x 50 PA	.375	.12	8.0	2.0	1.5	4.5	7.5	11.0



MIL DOT RETICLE

MIL-DOT: Originally designed for the US Marine Corps, it's useful for helping to estimate range, windage, and bullet holdover. It's perfect for long-distance shooters looking for ranging ability.

RETICLE SUBTENSIONS	MIL DOT				
	A	B	D	X	Z
6.5-20 x 50 PA	.5	.05	.2	1.0	.8

NOTE: Reticle images shown for representation only. Reticle image varies between scope models depending on magnification and reticle plane. The letters on the reticle images refer to the subtensions in the chart.

DIAMONDBACK®

HIGH PERFORMANCE RIFlescOPES

The Diamondback® line personifies the classic American hunting riflescope. Built for maximum durability in a 1-inch body, available in a wide variety of configurations, Argon gas purged, and o-ring sealed. The easily accessible side focus and parallax adjustment keeps a slim profile. XD extra-low dispersion glass increases resolution and color fidelity, and the XR fully multi-coated lenses maximize every minute of shooting light—all for an extremely reasonable price. Loaded with high-performance features discerning hunters truly appreciate—game animals, not so much.



SKU	MAGNIFICATION X OBJECTIVE LENS	RETICLE OPTIONS	WEIGHT	LENGTH	EYE RELIEF (MAX POWER)	FIELD OF VIEW @ 100 YARDS	TUBE SIZE	TURRET STYLE
Diamondback HP								
DBK-10019	4-16 x 42	Dead-Hold BDC	18.0 oz	12.5"	4.0"	23.8 - 6.1'	1"	Capped
DBK-10015	3-12 x 42					28.8 - 8.2'		
Diamondback								
DBK-04-BDC	4-12 x 40	Dead-Hold BDC	14.6 oz	12.0"	3.1"	32.4 - 11.3'	1"	Capped
DBK-03-BDC	3.5-10 x 50	Dead-Hold BDC	16.2 oz	12.5"		35.8 - 13.5'		
DBK-M-01P	3-9 x 40	V-Plex	14.4 oz	11.7"	3.3"	44.6 - 14.8'		
DBK-01-BDC		Dead-Hold BDC						
DBK-RIM	2-7 x 35 Rimfire	V-Plex	14.2 oz	11.6"	3.1"	64.3 - 19.3'		
DBK-08-BDC	1.75-5 x 32	Dead-Hold BDC	12.8 oz	10.2"	3.5"	68.3 - 23.1'		

Dual Use: Shooting Tactical / Hunting

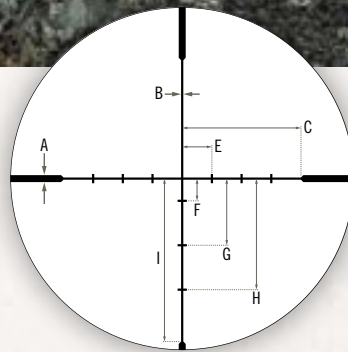
VISIT: www.VortexOptics.com or page 49 for more detailed information.



V-PLEX RETICLE

V-PLEX: A popular hunting reticle. It is designed for a wide variety of applications.

RETICLE SUBTENSIONS	V-PLEX MOA		
	A	B	C
3-9 x 40	1.0	.2	4.8
2-7 x 35	1.2	.3	6.1



DEAD-HOLD® BDC RETICLE

DEAD-HOLD® BDC: A customized hash-mark design that helps eliminate the guesswork on holdover and windage corrections. This reticle is perfect for hunting and shooting at varying ranges.

RETICLE SUBTENSIONS	DEAD-HOLD BDC MOA							
	A	B	C	E	F	G	H	I
4-16 x 42	.47	.15	8.0	2.0	1.5	4.5	7.5	11.0
3-12 x 42	.6	.2						
4-12 x 40	.6	.15	8.0	2.0	1.5	4.5	7.5	11.0
3.5-10 x 50	.72	.18						
3-9 x 40	.8	.2						
1.75-5 x 32	1.44	.36						

NOTE: Reticle images shown for representation only. Reticle image varies between scope models depending on magnification and reticle plane. The letters on the reticle images refer to the subtensions in the chart.



AS RUGGED AND RELIABLE AS THE RIDGE IS LONG

CROSSFIRE® II

30MM TUBE RIFlescOPES

High performance meets economical. Clear, tough, and bright, our popular Crossfire® II line is built to exceed the performance standards of similarly priced riflescopes. Long eye relief, a fast-focus eyepiece, fully multi-coated lenses, and resettable MOA turrets are hallmarks of the series.



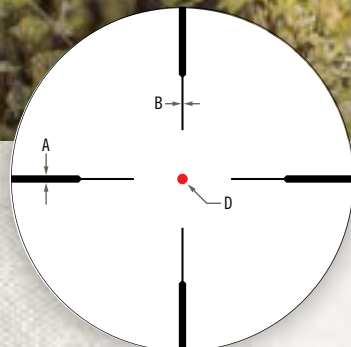
SKU	MAGNIFICATION X OBJECTIVE LENS	RETICLE OPTIONS	WEIGHT	LENGTH	EYE RELIEF (MAX POWER)	FIELD OF VIEW @ 100 YARDS	TUBE SIZE	TURRET STYLE
CF2-31045	6-24 x 50 AO	Dead-Hold BDC	23.6 oz	14.5"	4.0"	17.3 - 4.4'	30mm	Capped
CF2-31039	4-16 x 50 AO			14.2"	3.7"	25.3 - 7.0'		
CF2-31049	3-12 x 56 AO	V-Brite	21.1 oz	14.3"	3.5"	36.7 - 9.2'		
CF2-31037	1-4 x 24		16.0 oz	9.8"	4.0"	96.1 - 24.1'		

Dual Use: Shooting Tactical / Hunting

VISIT: www.VortexOptics.com or page 49 for more detailed information.

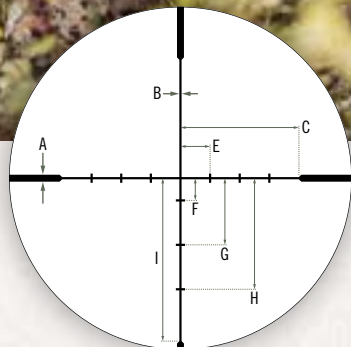


SNEAK AND YE SHALL FIND



V-BRITE® RETICLE

RETICLE SUBTENSIONS	V-BRITE MOA		
	A	B	D
3-12 x 56 AO	.75	.25	.75
1-4 x 24	2.3	.59	1.5



DEAD-HOLD® BDC RETICLE

RETICLE SUBTENSIONS	DEAD-HOLD BDC MOA							
	A	B	C	E	F	G	H	I
6-24 x 50 AO	.4	.1	8.0	2.0	1.5	4.5	7.5	11.0
4-16 x 50 AO	.45	.11						

NOTE: Reticle images shown for representation only. Reticle image varies between scope models depending on magnification and reticle plane. The letters on the reticle images refer to the subtensions in the chart.



CROSSFIRE® II

1-INCH TUBE RIFLESCOPES

Look for this scope up on a mountain or out in the field helping to bag dinner. The 1-inch Crossfire® II line offers all the same features of our 30mm configurations while offering an expanded line of magnifications and reticle choices. You may like the great price but you'll love the long eye relief, fast focus eyepiece, resettable turrets, fully multi-coated lenses, and the solid, high performance.



► **FAST FOCUS EYEPIECE**
Allows quick and easy reticle focusing

► **1 INCH TUBE**



► **NITROGEN GAS PURGED**



► **FULLY MULTI-COATED**
Anti-reflective lens coatings on every lens surface allow for brighter views.

► **RESETTABLE TURRETS**

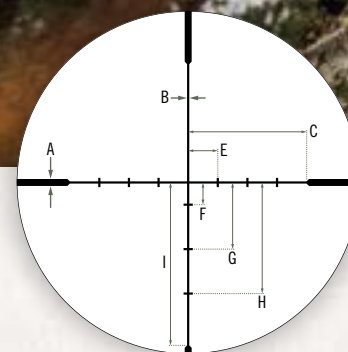
SKU	MAGNIFICATION X OBJECTIVE LENS	RETICLE OPTIONS	WEIGHT	LENGTH	EYE RELIEF (MAX POWER)	FIELD OF VIEW @ 100 YARDS	TUBE SIZE	TURRET STYLE
CF2-31033	6-18 x 44 AO	Dead-Hold BDC	19.6 oz	13.5"	3.7"	15.2 - 5.3'	1"	Capped
CF2-31029		V-Brite	20.6 oz					
CF2-31023	4-12 x 50 AO	Dead-Hold BDC	19.2 oz	14.2"	25.7 - 8.4'			
CF2-31019	4-12 x 40 AO		19.2 oz	13.6"				
CF2-31015	4-12 x 44	V-Plex	17.2 oz	13.1"	24.7 - 8.4'			
CF2-31013								
CF2-31011	3-9 x 50	Dead-Hold BDC	18.4 oz	12.7"	32.0 - 12.9'			
CF2-31027		V-Brite	18.6 oz					
CF2-31005	3-9 x 40	V-Plex	15.0 oz	12.0"	34.1 - 12.6'			
CF2-31007		Dead-Hold BDC	16.2 oz					
CF2-31025		V-Brite	12.0 oz					
CF2-31002	2-7 x 32 Scout	V-Plex	12.0 oz	10.5"	9.45"	18.3 - 5.2'		
CF2-31003	2-7 x 32	Dead-Hold BDC	14.3 oz	11.3"	3.9"	42.0 - 12.6'		
CF2-31001		V-Plex						
CF2-31001R	2-7 x 32 Rimfire	V-Plex						

Dual Use: Shooting Tactical / Hunting



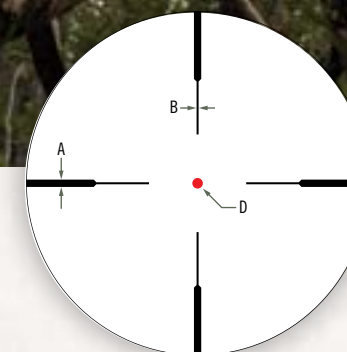
VISIT: www.VortexOptics.com or page 49 for more detailed information.

SIX STRONG POINTS—CROSSFIRE RIFLESCOPES DELIVER, AND THAT'S JUST ONE SIDE



DEAD-HOLD® BDC RETICLE

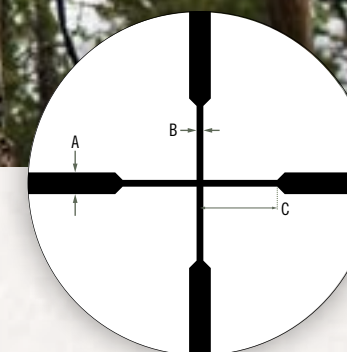
RETICLE SUBTENSIONS	DEAD-HOLD BDC MOA							
	A	B	C	E	F	G	H	I
6-18 x 44 AO	.4	.1						
4-12 x 50 AO								
4-12 x 40 AO								
4-12 x 44	.8	.3	8.0	2.0	1.5	4.5	7.5	11.0
3-9 x 50								
3-9 x 40								
2-7 x 32	.9	.4						



V-BRITE® RETICLE

RETICLE SUBTENSIONS	V-BRITE MOA		
	A	B	D
6-18 x 44 AO	.45	.12	4.0
3-9 x 50	.9	.25	.65
3-9 x 40			

NOTE: Reticle images shown for representation only. Reticle image varies between scope models depending on magnification and reticle plane. The letters on the reticle images refer to the subtensions in the chart.



V-PLEX RETICLE

RETICLE SUBTENSIONS	V-PLEX MOA		
	A	B	C
4-12 x 44	.8	.3	2.85
3-9 x 40			
2-7 x 32			





AVOID THE FLIPCAP BONEYARD

GREAT FLIP CAPS

"Another fantastic product by Vortex! I've gone through several brands and this one is by far the best one I've tried. It always seemed like they just didn't fit quite right and Vortex hit it out of the park. I've got a Vortex Viper PST 4-16 and they fit perfectly. Ultra-rugged and the fit and finish is consistent with the Vortex name. Its also nice to have your ballistics fit right into the cap where it's easy to see. Great Job!" –Niallum, Illinois



DEFENDER® FLIP CAPS

RIFLESCOPE ACCESSORIES

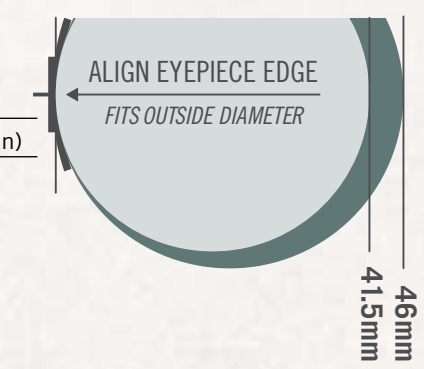
This is the last flip cap you will ever need! Virtually indestructible, this cap fits snugly on nearly all Vortex riflescopes and features a snap flat spring to keep your line of sight unobstructed.

Rifle ranges the world over are littered with broken flip caps. This is one cap you will most likely never see in a flip cap bone yard. The eyepiece cap has three stop positions. The first is vertical, to put your Dope Disk® (optional accessory) literally right in your face. The second at 45° and the third at 90° to lay flat.



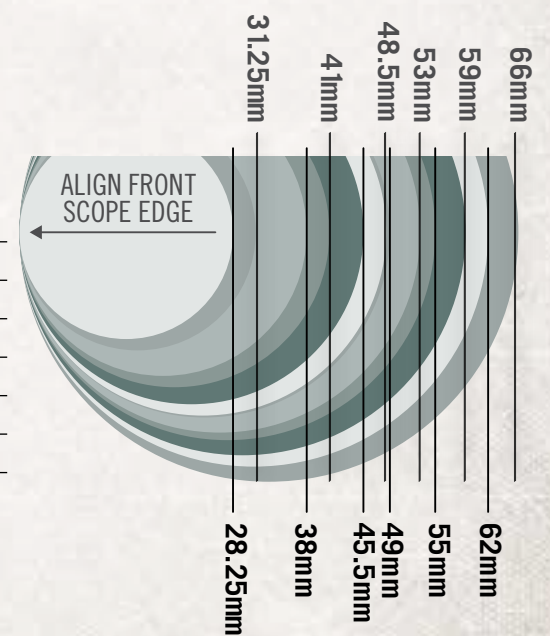
DEFENDER® FLIP CAP EYEPIECE:

E-10	41.5 - 46mm (1.6 - 1.8 in)
-------------	----------------------------



DEFENDER® FLIP CAP OBJECTIVE:

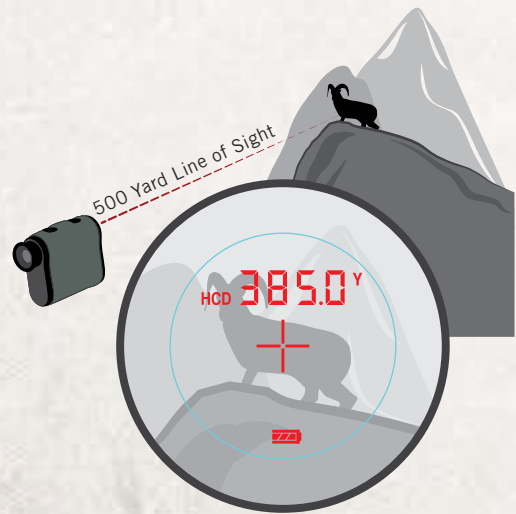
0-24	28.25 - 31.25mm (1.1 - 1.2 in)
0-32	38 - 41mm (1.5 - 1.6 in)
0-40	45.5 - 48.5mm (1.8 - 1.9 in)
0-44	49 - 53mm (1.9 - 2.1 in)
0-50	55 - 59mm (2.2 - 2.3 in)
0-56	62 - 66mm (2.4 - 2.6 in)



VISIT: www.VortexOptics.com for more detailed information.



LONG DISTANCE SHOTS
REQUIRE LONG DISTANCE RANGING



HCD CORRECTED SHOOT-TO RANGE

► **THREE RANGING MODES**

1. Horizontal Component Distance (HCD) mode displays the angle compensated distance to the target. This is the primary mode used by most bow and rifle hunters.
2. Scan mode displays distance readings when panning across a landscape or tracking a moving animal.
3. Line of Sight (LOS) mode displays the actual line of sight range. This mode is used by shooters making high-angle/long-distance shots in conjunction with angle corrected ballistic range cards or an application on a mobile device. Display also shows an incline angle.

RANGER® 1500

RANGEFINDER

The lightweight Ranger® 1500 is an easy to use rangefinder with a clean display and highly intuitive menu that quickly and accurately ranges targets from 9 to 1500 yards. The Primary Horizontal Component Distance (HCD) mode provides an angle-compensated distance reading because we know you don't always hunt on flat ground.

Three brightness settings coupled with fully multi-coated lenses deliver maximum light transmission and easy viewing in varying light conditions. Add o-ring seals and you get waterproof performance as well. The 1500 can be set to read in yards or meters and is perfect for hunters, target shooters, bow hunters, and other sportsmen who need to know accurate ranges.



► **FULLY MULTI-COATED LENSES**
Anti-reflective lens coatings on every lens surface allow for brighter views.

► **HCD (HORIZONTAL COMPONENT DISTANCE)**
This feature compensates for angle when ranging.



► **RUBBER ARMOR**
Durable rubber armor provides a secure, non-slip grip.

► **INTUITIVE DISPLAY**
Easy-to-use menu with a simple, clean display.



► **RANGING FORMAT**
Range in yards or meters.

► **UTILITY CLIP**
Provides quick, convenient access.

SKU	MAGNIFICATION	OPTICAL LENS DIAMETER	EYE RELIEF	FIELD OF VIEW @ 1000 YARDS / DEGREES	MIN. REFLECTIVE RANGE	MAX REFLECTIVE RANGE	WEIGHT	SIZE
RRF-151	6x	22mm	17mm	315' / 6.0°	9 yards	1500 yards	7.7 oz	3.0 x 3.9"

VISIT: www.VortexOptics.com for more detailed information.





RANGEFINDERS 20 Ranger® 1000



WHATEVER YOU CUT THE DISTANCE TO
THE RANGER 1000 WILL LET YOU KNOW

RANGER® 1000

RANGEFINDER

Capable of ranging targets to 1,000 yards, the Ranger® 1000 gives hunters and shooters the distance data needed to make accurate shots. Primary HCD (Horizontal Component Distance) mode displays an angle-compensated distance reading. Easy to use with a clean display and highly intuitive menu, the Ranger 1000 keeps things simple, yet provides a high level of performance.

Fully multi-coated lenses deliver optimal light transmission, and o-rings seal the Ranger 1000 for waterproof performance. Can be set to read in yards or meters to accommodate user preference. Ideal for gun hunters, target shooters and bow hunters, the Vortex Ranger 1000 is sure to be a hit—and ensure hits.



► **FULLY MULTI-COATED LENSES**
Anti-reflective lens coatings on every lens surface allow for brighter views.

► **HCD (HORIZONTAL COMPONENT DISTANCE)**
This feature compensates for angle when ranging.



► **RUBBER ARMOR**
Durable rubber armor provides a secure, non-slip grip.

► **INTUITIVE DISPLAY**
Easy-to-use menu with a simple, clean display.

► **RANGING FORMAT**
Range in yards or meters.

► **UTILITY CLIP**
Provides quick, convenient access.



SKU	MAGNIFICATION	OPTICAL LENS DIAMETER	EYE RELIEF	FIELD OF VIEW @ 1000 YARDS / DEGREES	MIN. REFLECTIVE RANGE	MAX REFLECTIVE RANGE	WEIGHT	SIZE
RRF-101	6x	22mm	17mm	315' / 6.0°	11 yards	1000 yards	7.7 oz	3.0 x 3.9"

VISIT: www.VortexOptics.com for more detailed information.



RANGEFINDERS 21 Ranger® 1000

RAZOR® HD

FULL SIZE ROOF PRISM BINOCULARS

Razor® HD binoculars, the pinnacle of the Vortex line, offer the ultimate combination of advanced optical technologies and premium components in a lightweight, ergonomic package. Hand-selected prisms and HD glass deliver unparalleled resolution and color fidelity, resulting in astonishingly sharp, high-definition images. Lenses fully multi-coated with Vortex's proprietary XR Plus anti-reflective coatings guarantee maximum brightness and glassing confidence during critical low-light periods. The true open hinge design, coupled with its magnesium chassis, makes the Razor lightweight, ultra-tough, and optimally ergonomic. Give yourself the edge with the Razor HD.



► **APO (APOCHROMATIC)**
Combination of index-matched lenses to correct color across the entire visual spectrum.



► **HD (HIGH DENSITY)**
Premium glass delivers the ultimate in resolution and color fidelity, resulting in high-definition images.



► **DIELECTRIC COATING**
Multi-layer prism coatings provide bright, clear, color-accurate images.



► **XR™ Plus**
Fully multi-coated lenses deliver the highest level of light transmission for maximum brightness.



► **ARGON GAS PURGED**



► **PLASMA TECH**
Plasma Tech provides unparalleled coating durability and performance.



► **ARMORTEK®**
Protects the exterior lenses from scratches, oil, and dirt.

SKU	MAGNIFICATION X OBJECTIVE LENS	CLOSE FOCUS DISTANCE	WEIGHT	HEIGHT X WIDTH	EYE RELIEF ADJUSTMENT	FIELD OF VIEW 1,000 YDS/DEGREES	INTERPUPILLARY DISTANCE
RZB-2104	12 x 50	10.0'	28.7 oz	6.8 x 5.1"	15.5mm	285.0' / 5.4°	57-74mm
RZB-2103	10 x 50		28.1 oz		16.5mm	315.0' / 6.0°	
RZB-2102	10 x 42	6.0'	24.8 oz	5.9 x 5.1"	17.5mm	362.0' / 6.9°	55-75mm
RZB-2101	8 x 42		24.2 oz			388.0' / 7.4°	

VISIT: www.VortexOptics.com for more detailed information.



GIVE YOURSELF EVERY ADVANTAGE
EVERY TIME

KAIBAB® HD

FULL SIZE ROOF PRISM BINOCULARS



The ultimate long-range, tripod binocular, the Kaibab® HD leaves little to the imagination. Pushing the performance envelope, the Kaibab HD offers the power and optical features you need to dissect the landscape in search of big game. Superior images, stunning resolution, and, of course, incredible power. When it comes to do-it-yourself, or else, the Kaibab HD delivers.



► **APO (APOCHROMATIC)**
Combination of index-matched lenses to correct color across the entire visual spectrum.



► **XR™ Plus**
Fully multi-coated lenses deliver the highest level of light transmission for maximum brightness.



► **HD (HIGH DENSITY)**
Premium glass delivers the ultimate in resolution and color fidelity, resulting in high-definition images.



► **ARGON GAS PURGED**



► **PLASMA TECH**
Plasma Tech provides unparalleled coating durability and performance.



► **DIELECTRIC COATING**
Multi-layer prism coatings provide bright, clear, color-accurate images.



► **ARMORTEK®**
Protects the exterior lenses from scratches, oil, and dirt.

SKU	MAGNIFICATION X OBJECTIVE LENS	CLOSE FOCUS	WEIGHT	HEIGHT X WIDTH	EYE RELIEF ADJUSTMENT	FIELD OF VIEW 1,000 YDS/DEGREES	INTERPUPILLARY DISTANCE
KAI-5603	20 x 56	23.0'	43.5 oz	7.7 x 5.7"	15.0mm	168' / 3.2°	60-76mm
KAI-5602	15 x 56					215' / 4.1°	

VISIT: www.VortexOptics.com for more detailed information.

VULTURE® HD

FULL SIZE ROOF PRISM BINOCULAR



Increase your spot-to-walk ratio with the Vulture® HD 15x56. Perfect for wide-open western landscapes where intense scrutiny of game-hiding terrain is a primary hunting tactic. Phase-corrected roof prisms, fully multi-coated lenses with proprietary XR anti-reflective coatings deliver super-bright images, edge-to-edge. Ultra-hard ArmorTek® coating on exterior lenses protects against scratches, oil, and dirt. Long-range tripod glassing is an art, let the Vulture HD be your brush.



► **HD (HIGH DENSITY)**
Premium glass delivers the ultimate in resolution and color fidelity, resulting in high-definition images.



► **XR™**
Fully multi-coated lenses increase light transmission for bright images.



► **ARGON GAS PURGED**



► **DIELECTRIC COATING**
Multi-layer prism coatings provide bright, clear, color-accurate images.



► **ARMORTEK®**
Protects the exterior lenses from scratches, oil, and dirt.

SKU	MAGNIFICATION X OBJECTIVE LENS	CLOSE FOCUS	WEIGHT	HEIGHT X WIDTH	EYE RELIEF ADJUSTMENT	FIELD OF VIEW 1,000 YDS/DEGREES	INTERPUPILLARY DISTANCE
VR-1556	15 x 56	15.0'	43.6 oz	7.6 x 5.8"	15.0mm	226' / 4.3°	59-74mm

VISIT: www.VortexOptics.com for more detailed information.



VIPER[®] HD

FULL/MID SIZE ROOF PRISM BINOCULARS

Viper[®] HD binoculars not only knock on the door of top-tier optical performance, they wedge a foot in. Wingman to our Razor[®] line, the advanced optical system in this powerhouse uses HD, XR fully multi-coated lenses for stunning image quality and superior light transmission. No matter the hunt, Viper HD's are up to the task. Period.



► **HD (HIGH DENSITY)**

Premium glass delivers the ultimate in resolution and color fidelity, resulting in high-definition images.



► **ARMORTEK[®]**

Protects the exterior lenses from scratches, oil, and dirt.



► **ARGON GAS PURGED**



► **XR[™]**

Fully multi-coated lenses increase light transmission for bright images.



► **DIELECTRIC COATING**

Multi-layer prism coatings provide bright, clear, color-accurate images.

SKU	MAGNIFICATION X OBJECTIVE LENS	CLOSE FOCUS	WEIGHT	HEIGHT X WIDTH	EYE RELIEF ADJUSTMENT	FIELD OF VIEW 1,000 YDS/DEGREES	INTERPUPILLARY DISTANCE
VPR-5015-HD	15 x 50	8.2'	28.4 oz	6.7 x 5.2"	16.0mm	210' / 4.0°	59-75mm
VPR-5012-HD	12 x 50	8.5'	28.0 oz		15.0mm	252' / 4.8°	
VPR-5010-HD	10 x 50	8.2'	28.4 oz	5.8 x 5.3"	19.5mm	278' / 5.3°	
VPR-4210-HD	10 x 42	5.1'	24.6 oz		16.5mm	319' / 6.1°	
VPR-4208-HD	8 x 42		24.2 oz		20.0mm	347' / 6.6°	



VISIT: www.VortexOptics.com for more detailed information.



WARNING —
VIPER BINOCULARS MAY CAUSE SORE MUSCLES AND FULL FREEZERS

FURY™ HD

MID SIZE ROOF PRISM LASER RANGEFINDER BINOCULAR

High quality optics and long-distance ranging capability come to together in our all-new Fury™ HD 10x42 Laser Rangefinding Binocular. Convenience, speed, efficiency, and valuable dual-purpose functionality—all the advantages of a high-definition binocular perfectly paired with an angle compensated rangefinder. Right side controls are simple to use and easily manipulated with a single hand – leaving your other hand free to hold your bow, rifle, or other important piece of equipment.



► HD (HIGH DENSITY)

Premium glass delivers the ultimate in resolution and color fidelity, resulting in high-definition images.



► ARMORTEK®

Protects the exterior lenses from scratches, oil, and dirt.



► XR™

Fully multi-coated lenses increase light transmission for bright images.



► NITROGEN GAS PURGED



THE ONLY THING IT CAN'T DO
IS BRING YOUR TRUCK CLOSER



HCD Corrected Shoot-To Range

NEW
For 2017

SKU	MAGNIFICATION X OBJECTIVE LENS	CLOSE FOCUS	WEIGHT	HEIGHT X WIDTH	EYE RELIEF ADJUSTMENT	MIN. REFLECTIVE RANGE	MAX REFLECTIVE RANGE	FIELD OF VIEW 1,000 YDS/DEGREES	INTERPUPILLARY DISTANCE
*LRF300	10x42	20'	31.8 oz	5.75 x 5.9"	16.0mm	10 yards	1600 yards	314.4' / 6.0°	54-69mm

*NEW for 2017



VISIT: www.VortexOptics.com for more detailed information.

DIAMONDBACK®

FULL/MID/COMPACT SIZE ROOF PRISM BINOCULARS

The legendary Diamondback® binocular series redefines the price vs performance ratio in the world of optics. The short-hinge design and upscale sleek look grabs the eye and leaves more room for your hands—making them physically easy to hold. The optical system offers stunning views and impressive low-light performance. An ultra-wide field of view lets you efficiently cover ground and acquire subjects with ease.



► **RUBBER ARMOR**
Durable rubber armor provides a secure, non-slip grip.



► **DIELECTRIC COATING**
Multi-layer prism coatings provide bright, clear, color-accurate images.



► **FULLY MULTI-COATED**
Anti-reflective lens coatings on every lens surface allow for brighter views.



► **ARGON GAS PURGED**

SKU	MAGNIFICATION X OBJECTIVE LENS	CLOSE FOCUS	WEIGHT	HEIGHT X WIDTH	EYE RELIEF ADJUSTMENT	FIELD OF VIEW 1,000 YDS/DEGREES	INTERPUPILLARY DISTANCE
DB-207	12 x 50	7.0'	28.7 oz	6.7 x 5.5"	14.0mm	271' / 5.2°	60-75mm
DB-206	10 x 50		29.6 oz		17.0mm	315' / 6.0°	
DB-205	10 x 42	6.7'	21.4 oz	5.8 x 5.1"	15.0mm	330' / 6.3°	55-75mm
DB-204	8 x 42	5.0'	21.8 oz		17.0mm	393' / 7.5°	
DB-203	10 x 32	5.3'	15.4 oz	4.5 x 4.6"	13.6mm	340' / 6.5°	55-75mm
DB-202	8 x 32		15.5 oz		15.6mm	426' / 8.1°	
DB-201	10 x 28	6.5'	13.5 oz	4.4 x 4.6"	16.0mm	273' / 5.1°	55-74mm
DB-200	8 x 28		14.0 oz		18.0mm	332' / 6.2°	



VISIT: www.VortexOptics.com for more detailed information.



DIAMONDBACK BINOCULARS THE WORKHORSE OF THE VORTEX LINEUP





CROSSFIRE®

FULL/MID SIZE ROOF PRISM BINOCULARS

Need a quality, performance-driven binocular that won't break the bank? Enter the Crossfire® series—their optical system, housing, and aesthetic push into a realm previously unheard of at this price point. Fully multi-coated lenses promote impressive optical quality, while a wide field of view and enhanced depth of field ensure optimal subject acquisition. They may be the entry point in our roof prism lineup, but there is nothing entry-level about these binoculars.



► **FULLY MULTI-COATED**
Anti-reflective lens coatings on every lens surface allow for brighter views.



► **RUBBER ARMOR**
Durable rubber armor provides a secure, non-slip grip.



► **NITROGEN GAS PURGED**

SKU	MAGNIFICATION X OBJECTIVE LENS	CLOSE FOCUS	WEIGHT	HEIGHT X WIDTH	EYE RELIEF ADJUSTMENT	FIELD OF VIEW 1,000 YDS/DEGREES	INTERPUPILLARY DISTANCE
CF-4304	12 x 50	9.8'	30.3 oz	6.6 x 5.4"	15mm	273' / 5.2°	60-76mm
CF-4303	10 x 50			6.7 x 5.4"	17mm	320' / 6.1°	
CF-4302	10 x 42	8.0'	23.3 oz	6.0 x 5.1"	15mm	325' / 6.2°	56-76mm
CF-4301	8 x 42	7.5'	23.5 oz	6.2 x 5.1"	17mm	393' / 7.5°	



VISIT: www.VortexOptics.com for more detailed information.

RAPTOR™

MID SIZE PORRO PRISM BINOCULARS

Porro prism performance in a mid-size, wide-angle design, the Raptor™ binocular offers bright, crisp images with excellent color fidelity—even in low light conditions. The design accommodates a wide range of interpupillary distances to fit anyone in the family.



► **FULLY MULTI-COATED**
Anti-reflective lens coatings on every lens surface allow for brighter views.



► **RUBBER ARMOR**
Durable rubber armor provides a secure, non-slip grip.



► **NITROGEN GAS PURGED**

SKU	MAGNIFICATION X OBJECTIVE LENS	CLOSE FOCUS	WEIGHT	HEIGHT X WIDTH	EYE RELIEF ADJUSTMENT	FIELD OF VIEW 1,000 YARDS/DEGREES	INTERPUPILLARY DISTANCE
R310	10 x 32	15.0'	17.6 oz	4.5 x 5.7"	13.0mm	339' / 6.3°	50-70mm
R385	8.5 x 32		17.3 oz		14.0mm	390' / 7.4°	



VISIT: www.VortexOptics.com for more detailed information.



ELEVATE YOUR VIEW WITH THE VANQUISH

VANQUISH®

COMPACT REVERSE PORRO PRISM BINOCULARS

If this compact traveler could talk, it would tell of world-class adventures and probably brag about its forward-thinking engineering and on-the-go features—such as its wide field of view and reverse Porro prism design with fully multi-coated optics. Add in its lean 12.7 ounce weight and most would agree the Vanquish® is the perfect companion.



► **FULLY MULTI-COATED**
Anti-reflective lens coatings on every lens surface allow for brighter views.



► **RUBBER ARMOR**
Durable rubber armor provides a secure, non-slip grip.



► **NITROGEN GAS PURGED**

SKU	MAGNIFICATION X OBJECTIVE LENS	CLOSE FOCUS	WEIGHT	HEIGHT X WIDTH	EYE RELIEF ADJUSTMENT	FIELD OF VIEW 1,000 YDS/DEGREES	INTERPUPILLARY DISTANCE
VNQ-1026	10 x 26	7.6'	12.7 oz	4.7 x 4.4"	16mm	294' / 5.6°	57-71mm
VNQ-0826	8 x 26				15mm	352' / 6.7°	

VISIT: www.VortexOptics.com for more detailed information.



BECAUSE YOU EAT MEAT
AND LOVE VEGETARIANS

SOLO®

MONOCULARS

You can always have a quality optic close at hand with the Solo® monocular. This compact, easy-to-carry monocular delivers quality viewing for outdoor enthusiasts who wish to bring nature a bit closer. The integral utility clip (36mm model only) attaches to flat-edged surfaces for quick external access. From bow hunters to backpackers, the Solo makes a great addition to any gear list.



► **RUBBER ARMOR**
Durable rubber armor provides a secure, non-slip grip.



► **FULLY MULTI-COATED**
Anti-reflective lens coatings on every lens surface allow for brighter views.



► **NITROGEN GAS PURGED**

► **UTILITY CLIP**

The versatile, multi-position utility clip allows for multiple attachment points and quick attachment to pocket edges, equipment or vests. (36mm model only)

SKU	MAGNIFICATION X OBJECTIVE LENS	EYE RELIEF ADJUSTMENT	CLOSE FOCUS DISTANCE	FIELD OF VIEW AT 1,000 YARDS / DEGREES	WEIGHT	LENGTH
S136	10 x 36	15.0mm		325' / 6.2°		
S836	8 x 36	18.0mm	16.4'	393' / 7.5°	9.7 oz	4.9"
S105	10 x 25	14.5mm		315' / 6.0°		
S825	8 x 25	15.0mm	16.4'	378' / 7.2°	5.6 oz	4.4"

VISIT: www.VortexOptics.com for more detailed information.



RAZOR[®] HD

SPOTTING SCOPES

Setting a new standard in high-end optical technologies, precision craftsmanship, and ultra-sleek functionality, the newly engineered Razor[®] HD is one of the finest spotting scopes on the market. Period. Premium HD glass lens elements, painstakingly hand selected and precision-ground to exacting standards, deliver brilliant, razor-sharp, true-to-life views. Advanced optical elements eliminate aberrations for distortion-free, flat field images with unmatched edge-to-edge sharpness, remarkable clarity, resolution, and color accuracy. Fully multi-coated with XR coatings, our new spotters yield maximum light transmission—an extremely critical attribute when finding and evaluating game in low light.



► **ARMORTEK[®]**
Protects the exterior lenses from scratches, oil, and dirt.



► **XR[™] Plus**
Fully multi-coated lenses deliver the highest level of light transmission for maximum brightness.



► **RUBBER ARMOR**
Durable rubber armor provides a secure, non-slip grip.



► **ARGON GAS PURGED**



► **HD (HIGH DENSITY)**
Premium glass delivers the ultimate in resolution and color fidelity, resulting in high-definition images.



► **DIELECTRIC COATING**
Multi-layer prism coatings provide bright, clear, color-accurate images.

► **ROTATING TRIPOD COLLAR**

The collar provides adjustable viewing angles. (65mm and 85mm models)



► **PLASMA TECH**
Provides unparalleled coating durability and performance.

SKU	MAGNIFICATION X OBJECTIVE LENS	EYEPiece POSITION	EYE RELIEF ADJUSTMENT	CLOSE FOCUS	FIELD OF VIEW 1,000 YARDS/DEGREES	SCOPE WEIGHT	SCOPE LENGTH
*RS-85A	27-60 x 85	Angled	16.7-17.0mm	16.4'	117-68' / 2.2-1.3°	65.6 oz	15.5"
*RS-85S		Straight					16.2"
*RS-65A	22-48 x 65	Angled	16.7-17.0mm	26.2'	138-84' / 2.7-1.6°	56.8 oz	14.8"
*RS-65S		Straight					15.6"
RZR-50A1	11-33 x 50	Angled	16-19mm	6.6'	191-96' / 3.6-1.8°	25.0 oz	10.3"
RZR-50S1		Straight					11.0"

*NEW for 2017 US Patent D595,754S

VISIT: www.VortexOptics.com for more detailed information.



THE SKY IS THE LIMIT
WITH THE RAZOR HD SPOTTER

EVERYTHING I EXPECTED

"The new Razor HD 85mm spotter has met my expectations and then some! Scope feels solid in the hand, the focus knob is incredibly smooth and even works great inside the supplied case when mounted on a tripod. The ability to use the spotter in such low light conditions is fantastic to say the least. The multi-position tripod mount collar accommodates any glassing position. From focus knob to bayonet eyepiece, the construction of this Vortex scope speaks for itself!" —Rockey, Wyoming

SMALL BUT MIGHTY!

Quite simply, this is one of the finest spotting scopes on the market. Our 50mm Razor[®] HD competes at the highest level of performance! This little powerhouse delivers eye-popping, high-definition images across the entire field of view with no color fringing, resolution degradation, or color fidelity dilution at extreme distances. If you are looking for a packable, lighter weight spotter, this is it.



NEW
2017

SPOTTING SCOPES 37 Razor[®] HD

SPOTTING SCOPES 36 Razor[®] HD

NEW
2017

NEW
For 2017

VIPER[®] HD

SPOTTING SCOPES

For long-range observation, Viper[®] HD spotting scopes put incredible viewing at your fingertips. Count on HD (High Density) extra-low dispersion glass for impressive resolution and color fidelity, and XR fully multi-coated lenses for maximum brightness. This is easily the best way to locate your trophy without putting a mile on your boots.



► **ARMORTEK[®]**
Protects the exterior lenses from scratches, oil, and dirt.



► **RUBBER ARMOR**
Durable rubber armor provides a secure, non-slip grip.



► **ARGON GAS PURGED**



► **HD (HIGH DENSITY)**
Premium glass delivers the ultimate in resolution and color fidelity, resulting in high-definition images.



► **XR[™]**
Fully multi-coated lenses increase light transmission for bright images.



► **DIELECTRIC COATING**
Multi-layer prism coatings provide bright, clear, color-accurate images.

► **ROTATING TRIPOD COLLAR**

The collar provides adjustable viewing angles.

SKU	MAGNIFICATION X OBJECTIVE LENS	EYEPIECE POSITION	EYE RELIEF ADJUSTMENT	CLOSE FOCUS	FIELD OF VIEW 1,000 YARDS/DEGREES	SCOPE WEIGHT	SCOPE LENGTH
VPR-80A-HD	20-60 x 80	Angled	20-15mm	22.0'	110-50' / 2.1-1.0°	67.0 oz	17.5"
VPR-80S-HD		Straight				66.1 oz	
VPR-65A-HD	15-45 x 65	Angled	20-15mm	16.0'	140-65' / 2.7-1.2°	53.3 oz	15.8"
VPR-65S-HD		Straight				52.0 oz	



VISIT: www.VortexOptics.com for more detailed information.



WE'LL HELP YOU FIND HIM
GETTING OVER THERE IS UP TO YOU

FANTASTIC GLASS!

"As a guide, I depend on optics to locate animals, then to make a decision whether or not to pursue the animal. I bought this last summer and used it during bear, antelope, deer, and elk seasons. I am very pleased with the durability, ease of use, and the quality of the scope."—Chris, New Mexico

HIGH COUNTRY[™] TRIPOD

At just 2.2lbs, the High Country[™] is designed for hunting at altitudes where every ounce counts. Three variable leg angles and four section leg locks ensure comfortable viewing from nearly any position.



DIAMONDBACK®

SPOTTING SCOPES

Born into the bloodline of our popular Diamondback® family, this spotter delivers outstanding performance—clearly a superb choice when you need a heavyweight performer in a light, compact package. The Diamondback optics guarantee a bright image throughout the magnification range, and, as true to all Diamondback optics, the rugged construction stands up to rough use in the field.

► ROTATING TRIPOD COLLAR

The collar provides adjustable viewing angles.



► NITROGEN GAS PURGED



► XR™

Fully multi-coated lenses increase light transmission for bright images.

► DIELECTRIC COATING

Multi-layer prism coatings provide bright, clear, color-accurate images.



SKU	MAGNIFICATION X OBJECTIVE LENS	EYEPIECE POSITION	EYE RELIEF ADJUSTMENT	CLOSE FOCUS	FIELD OF VIEW 1,000 YARDS/DEGREES	SCOPE WEIGHT	SCOPE LENGTH
DBK-80A1	20-60 x 80	Angled	16.5-20mm	22'	105-51' / 2.0-1.0°	47.1 oz	14.8"
DBK-80S1		Straight					15.7"
DBK-60A1	20-60 x 60	Angled	14.0-17mm		114-51' / 2.2-1.0°	33.8 oz	14.0"
DBK-60S1		Straight					14.4"



VISIT: www.VortexOptics.com for more detailed information.



WILLING TO GO THE DISTANCE
JUST LIKE YOU

SIZE + WEIGHT + PRICE = DOWN ANIMAL

"I was looking for a good optic that wouldn't break the bank or my back while hunting high country. This scope was the perfect combination. So many reasonably priced scopes that were 20-60 X 60 were twice the size and weight. This was just as good but small and lightweight enough to carry anywhere." —Treebobby, Washington



INCLUDED IN PACKAGE:

Diamondback® spotting scopes come with a zoom eyepiece and a custom view-through case for optimal protection.

TRIPODS

SUMMIT™, PRO GT, AND HIGH COUNTRY™



SUMMIT™ SS-P

Our ultimate backpacking tripods provide the perfect combination of compact size, lightweight design, rugged build, and fast operation. Plus, the split center column allows you to get close to the ground.



PRO GT

For reliable performance at a great cost, look to the Pro GT. Designed to handle any condition, sturdy anodized legs combined with a rugged 3-way quick-release pan head deliver solid support for your optics.



NEW
For 2017

HIGH COUNTRY™

Smaller, lighter, and more compact than our Pro GT, the High Country™ is designed for hunting at altitudes where every ounce counts. The variable leg angles and flip lever leg locks makes set-up a snap.



SUMMIT™ CAR WINDOW MOUNT

Our compact car window mount features an easy-to-manipulate ball head for fast subject acquisition. The quick-release plate allows convenient mounting of optics.

BINOCULAR

ACCESSORIES



GLASSPAK™ BINOCULAR HARNESS

(SKU: P400)

Housing your binoculars and protecting them from the elements while keeping them close at hand is imperative when in the field. The Vortex® GlassPak™ binocular harness will do just that. It accommodates a range of full size binoculars, yet keeps them snug and secure. The mesh side pockets hold calls, a lens pen, and other small items needing quick access. Tethers attach to your binocular preventing accidental drops, and the rear zippered pocket holds larger items such as a cell phone.



GUIDE BINOPACK

(SKU: P300)

Protect your binoculars, keep the lenses clean, and stow essential gear with the Guide BinoPack. An integrated bino leash prevents drops and lets you lower your bino with confidence. A generous front zippered pouch with shell loops is perfect for larger items such as rangefinders, a knife, fire starters, etc. The side pockets, zippered pocket on the rear face, and elastic sleeves on the top hold additional items.



BINOCULAR TRIPOD ADAPTER

(SKU: 400)

Maximize performance by using the Vortex® tripod adapter to steady viewing on a tripod or car window mount.



UNI-DAPTOR TRIPOD ADAPTER

(SKU: UNI-DAP)

Vortex's innovative Uni-Daptor is precision machined and fits any tripod-adaptable binocular. Its slim profile allows it to fit between the barrels of the largest high-powered binoculars, and a quick-release connector allows the binocular to be removed for hand-held use without disconnecting the entire adapter.



ARCHER'S BINOCULAR STRAP

(SKU: ARCH)

Keep your binoculars at your side and out of harm's way with the archer's binocular strap.



2X DOUBLER

(SKU: 2X)

This handy tool doubles the magnification of most 32mm or larger binoculars and the Recon® monocular to take in details more typically observed through a spotting scope.



BINOCULAR HARNESS

(SKU: VTHARNESS)

Say goodbye to neck strain and keep your binoculars from bouncing against you as you hike down the trail.

TRIPOD SPECIFICATIONS

SKU	MODELS	WEIGHT	MAX LOAD	MINIMUM TO MAXIMUM HEIGHT	FOLDED DIMENSIONS	LEG SECTIONS	LEG ANGLES	LEG LOCKS	HEAD DESIGN
ST-5	Summit SS-P	2.0 lbs	5 lbs	6.3 - 54.5"	14.0 x 4.5"	5	3	Twist	Pan
CWM-SS2	Summit Car Mount	12.3 oz		5.4"	5.4 x 3.0"	-	-	-	Ball
PRO-2	Pro GT	4.4 lbs	10 lbs	23.3 - 67.1"	25.0 x 5.0"	3	3	Flip-up	Pan
*HC2	High Country	2.2 lbs	5 lbs	15.0 - 52.3"	21.0 x 3.8"	4	3	Lever	Ball
CWM	VTX Car Mount	1.2 lbs	5 lbs	—	—	—	—	—	Pan

*NEW for 2017

VISIT: www.VortexOptics.com for more detailed information.



VISIT: www.VortexOptics.com for more detailed information.



RIFLESCOPE

RINGS AND ACCESSORIES

FLARE™ ILLUMINATED BUBBLE LEVEL

Everything you ever wanted in a level. Low-signature, rear-facing illumination with three intensity levels ensures optimal visibility in all light conditions. The recessed push-button control is easily accessed from a shooting position. The integrated Picatinny rail mount attaches easily and keeps the level low and trim. It can be mounted and removed with the rifle scope on or off your rifle.



LO PRO BUBBLELEVEL™

This slim, low-profile design allows the Bubblelevel™ to be mounted on most scopes without removing the scope from the rifle. It is easily visible without losing the sight picture. Available for 34mm, 30mm, and 1-inch rifle scope tubes.



BUBBLE LEVEL

Designed to maximize accuracy, our bubble level makes it easy to maintain a perfect horizontal hold during extreme-range shooting. Available for 35mm, 34mm, 30mm, and 1-inch rifle scope tubes.



TORQUE WRENCH MOUNTING KIT

Tighten to the specified torque and not a smidgen more! This tool is easy to operate, simple to set, and offers fast, accurate tension wherever and whenever you need it. The easy to read inch-pound increments ensure you tighten in 1in/lb increments.



DEFENDER® FLIP CAP

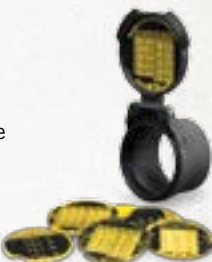
New sizes for 2017. This is the last flip cap you will ever need! Virtually indestructible, this cap will fit snugly on nearly all Vortex® riflescopes and features a snap flat spring that will keep your line of sight unobstructed.



Rifle ranges the world over are littered with broken flip caps. This is one cap you will most likely never see in a flip cap boneyard. The E-10 cap has three stop positions. The first is vertical, to put your dope disk (optional accessory) literally right in your face. The second at 45° and the third at 90° to lay flat.

DOPE DISK®

Data on Previous Engagement (DOPE) Disk. Visit us online at dopedisks.vortexoptics.com to enter your ballistics information on range, drop, wind, and elevation to create your customized disk. Choose from several different styles and enter your unique data. Be sure and make one for each of your favorite hunting locations. Dope Disks® snap easily into the lid of the E-10 Defender® Flip Cap so you will never lose your Dope again!



SWITCHVIEW™ THROW LEVER

Maximize the efficiency of magnification transitions with fluid precision using our throw lever. Constructed of skeletonized, lightweight, tough, hard-coat anodized machined aluminum.



PRECISION EXTENDED CANTILEVER MOUNT

Available in 30mm and 34mm with options for 20 MOA cant. These extended cantilevers have all the same features as the Precision Matched Rings and are designed for mounting scopes with a forward location, providing correct eye relief and head placement. The quick release model is shown here.



PRECISION MATCHED RINGS

Machined with certified USA 7075 T6 billet aluminum and held to an extremely tight tolerance of .0005 using a precision Computer Numeric Controlled (CNC) mill. Our Precision Matched Rings are kept in pairs throughout the manufacturing process — ensuring perfection from one set to another. These Vortex rings are then serialized, vibratory tumbled, hand-bead blasted and finished with a Type III hard coat anodize. Available in two heights for 1-inch tubes, three heights for 35mm and 30mm tubes, and five heights for 34mm tubes.



PRO EXTENDED CANTILEVER MOUNT

These USA-made extended cantilever mounts are available in 34mm, 30mm, and 1-inch tubes sizes and provide the correct height and forward placement for proper scope mounting.



PRO RIFLESCOPE RINGS

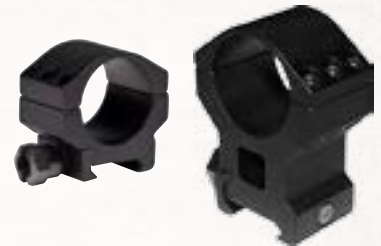
Streamlined, lightweight, and durable, these rings use four T-15 Torx-style socket cap screws for secure mounting of your rifle scope. This unique design permits easy mounting and the rings can remain on your scope when detached from the base. They are precision CNC machined from high strength 6061-T6 aluminum alloy with a durable black matte anodized finish. Available in three heights for 30mm and 1-inch tubes.



NOTE: The height measurements for all rings and mounts are from base and are shown in inches and millimeters.

TACTICAL RINGS

Robust, wide 6-screw ring offers solid support for 30mm rifle scope tubes. These tactical rings are perfect for mounting red-dot optics, magnifiers, and other accessories with 30mm tube diameters to your Picatinny rail. When using this ring to mount a conventional rifle scope, we strongly recommend lapping the rings for a proper and secure fit for your optic. Tactical rings are sold individually and are available in three heights for 30mm tubes and one height for absolute co-witness and lower 1/3 co-witness.



HUNTER RINGS

Mounting to a Picatinny or Weaver type rail, the standard 2-screw Hunter rings are a nice match for general hunting setups. Made from aircraft-grade 6061-T6 aluminum for optimum strength. Available in three heights for 30mm and 1-inch tubes.



SPORT CANTILEVER RED DOT RING

Provide extra rail room for rear BUIS when using the StrikeFire® II red dot along with the VMX-3T magnifier. Available for 30mm tubes in absolute co-witness and lower 1/3 co-witness.



SPORT CANTILEVER RIFLESCOPE MOUNT

Vortex® cantilever ring mounts provide the correct height and forward placement for proper scope mounting on flat-top AR's. Available for 30mm tubes in 2- or 3-inch offset.



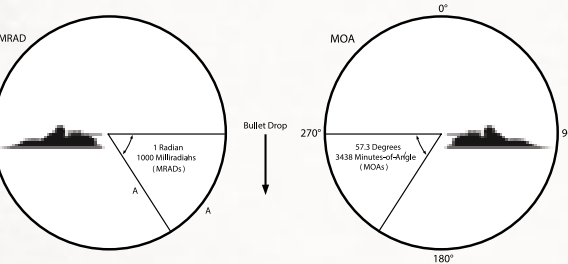
VISIT: www.VortexOptics.com for more detailed information.

VISIT: www.VortexOptics.com for more detailed information.



TECHNICAL DATA

MOA VERSUS MRAD Both minute-of-angle (MOA) and Milliradian (mrad) unit of arc scales are effective when using subtension measurements for ranging and bullet trajectory drop compensation in riflescope reticles.



MRAD MRAD unit of measurements are based on the radian. A radian is the angle subtended at the center of a circle. There are 6.283 radians in a circle and 1000 milliradians in a radian for a total of 6283 milliradians (MRADS) in a circle. An MRAD will subtend 3.6 inches at a distance of 100 yards. Most riflescopes using MRAD adjustments will use 1/10 MRAD clicks which subtend .36 inches at 100 yards.

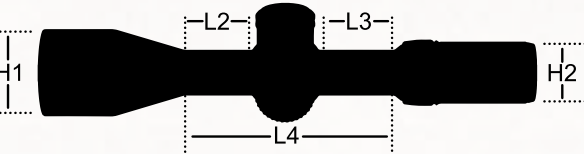
MOA MOA unit of arc measurements are based on degrees and minutes. There are 360 degrees in a circle and 60 minutes in a degree for a total of 21,600 minutes in a circle. A minute of angle will subtend 1.05 inches at a distance of 100 yards. Most riflescopes using MOA adjustments will use 1/4-minute clicks which subtend .26 inches at 100 yards.

NOTE: Visit www.VortexOptics.com for more detailed information and videos on how to range with MRAD and MOA Reticles.

FIRST FOCAL PLANE VERSUS SECOND FOCAL PLANE All riflescope reticles can be termed either first focal plane (FFP) or second focal plane (SFP) depending on their internal location within the riflescope. FFP reticles are located in the front of the erector tube near the windage and elevation turrets and will appear to grow or shrink in size as the magnification changes. SFP reticles are located within the eyepiece assembly and will not change in size as the magnification changes.

RIFLESCOPE DIMENSIONS

These dimensions will help determine which rings and flip caps will work best for each scope. For more details, please visit the riflescope spec pages on our website. www.VortexOptics.com



NOTE: Dimensions measured in inches.

MODEL	LENGTHS			HEIGHTS	
	L2	L3	L4	H1	H2
RAZOR HD AMG RIFLESCOPES					
6-24 x 50	2.1	2.3	6	2.3	1.72
RAZOR HD GEN II RIFLESCOPES					
4.5-27 x 56	2.0	2.2	6.1	2.55	1.81
3-18 x 50				2.32	
1-6 x 24	2.8	1.5	5.9	1.29	
RAZOR HD RIFLESCOPES					
5-20 x 50	2.9	2.5	6.9	2.33	1.74
RAZOR HD LH RIFLESCOPES					
3-15 x 42	2.1	2.1	5.6	2.02	1.7
2-10 x 40	1.6		5.0	1.94	
1.5-8 x 32				1.62	
GOLDEN EAGLE HD RIFLESCOPES					
15-60 x 52	3.5	2.25	7.5	2.4	1.73
VIPER PST GEN II RIFLESCOPES					
5-25 x 50	2.25	2.5	6.85	2.3	1.8
3-15 x 44	2.3			2.08	
2-10 x 32	2.4			1.61	
1-6 x 24	3.0	2.25	1.29		

VISIT: www.VortexOptics.com for more detailed information on specs or reticles.

MODEL	LENGTHS			HEIGHTS	
	L2	L3	L4	H1	H2
VIPER HST RIFLESCOPES					
6-24 x 50	2.5	2.2	6	2.26	1.63
4-16 x 44	2		5.6	2.03	
VIPER HSLR RIFLESCOPES					
6-24 x 50	2.5	2.2	6.0	2.26	1.63
4-16 x 50	2.0		5.6		
VIPER HS RIFLESCOPES					
4-16 x 50	2.0	2.2	5.6	2.26	1.63
4-16 x 44				2.03	
2.5-10 x 44					
VIPER RIFLESCOPES					
6.5-20 x 50 PA	2.8	2.2	6.4	2.27	1.72
STRIKE EAGLE RIFLESCOPES					
1-6 x 24	2.3	2.2	6.6	1.2	1.7
DIAMONDBACK TACTICAL RIFLESCOPES					
4-12 x 40	1.9	2.1	5.25	1.86	1.58
3-9 x 40	1.8	2.2	5.3		
DIAMONDBACK HP RIFLESCOPES					
4-16 x 42	1.9	1.9	5.2	2.0	1.69
3-12 x 42					
DIAMONDBACK RIFLESCOPES					
4-12 x 40	2.4	2.0	5.6	1.89	1.69
3.5-10 x 50	2.0	2.1	5.4	2.29	
3-9 x 40				1.89	
2-7 x 35 (R)	1.7		5.1	1.72	
1.75-5 x 32	1.9	1.9		1.55	
CROSSFIRE II RIFLESCOPES					
6-24 x 50 AO	1.9	2.6	5.9	2.52	1.73
6-18 x 44 AO		2.2	5.4	2.3	1.61
4-16 x 50 AO		2.3	5.6	2.52	1.73
4-12 x 50 AO	2.2	2.2	5.6	2.44	1.71
4-12 x 40 AO		1.9	5.3	2.05	
4-12 x 44			5.5	2.01	
3-12 x 56 AO	1.9	2.6	5.0	2.71	1.73
3-9 x 50	2.1	1.8	5.1	2.24	1.71
3-9 x 40				1.84	
2-7 x 32 (R)		1.6	5.0	1.53	
2-7 x 32 Scout					
1-4 x 24	2.8	2.0	6.1	1.18	1.73



COMPARISON CHART

Some people see the glass as half full, others as half empty. Then there are the scholarly engineer types who question why the glass is the wrong size for the contents. If you fall into the last category and love to know all the details and specifications, these pages are for you! If you want more details than what you see here, please visit our webpage at www.VortexOptics.com.

CONTINUED ON THE FOLLOWING PAGE Don't see the SKU you want? Sorry to scare you! Flip the page and see if it's there.

SKU	MAGNIFICATION X OBJECTIVE LENS	RETICLE OPTIONS	WEIGHT	LENGTH	EYE RELIEF (MAX POWER)	FIELD OF VIEW @ 100 YARDS	TUBE SIZE	TURRET STYLE	ADJUSTMENT GRADUATION	TRAVEL PER ROTATION	ELEVATION ADJUSTMENT	WINDAGE ADJUSTMENT	PARALLAX (YARDS)
RAZOR® HD AMG™ RIFLESCOPES <i>(Tactical pg. 4-7)</i>													
RZR-AMG-2	6-24 x 50 FFP	EBR-7 MRAD	28.8 oz	15.2"	3.6"	20.4 - 5.1'	30mm	L-Tec	.1 MRAD	10 MRAD	28 MRAD	19 MRAD	25 to Infinity
RZR-AMG-1		EBR-7 MOA							¼ MOA	25 MOA	95 MOA	65 MOA	
RAZOR® HD GEN II RIFLESCOPES <i>(Tactical pg. 8-11)</i>													
RZR-42704	4.5-27 x 56 FFP	EBR-1C MRAD	48.5 oz	14.4"	3.7"	25.3 - 4.4'	34mm	L-Tec	.1 MRAD	10 MRAD	33 MRAD	14 MRAD	32 to Infinity
RZR-42705		EBR-2C MOA							¼ MOA	25 MOA	114 MOA	48 MOA	
RZR-42706		EBR-2C MRAD							.1 MRAD	10 MRAD	33 MRAD	14 MRAD	
RZR-31803	3-18 x 50 FFP	EBR-2C MOA	46.5 oz	14.4"	3.7"	37.8 - 6.25'	34mm	L-Tec	¼ MOA	25 MOA	120 MOA	69 MOA	25 to Infinity
RZR-31802		EBR-2C MRAD							.1 MRAD	10 MRAD	35 MRAD	20 MRAD	
RZR-16003	1-6 x 24	JM-1 BDC MOA	25.2 oz	10.1"	4.0"	115.2 - 20.5'	30mm	Low Capped	½ MOA	50 MOA	150 MOA	150 MOA	100
RZR-16005		VMR-2 MOA							.2 MRAD	20 MRAD	43 MRAD	43 MRAD	
RZR-16004		VMR-2 MRAD											
RAZOR® HD RIFLESCOPES <i>(Tactical pg. 12-15)</i>													
RZR-52006	5-20 x 50 FFP	EBR-2B MRAD	35.2 oz	15.8"	3.9"	22.0 - 5.76'	35mm	Tactical	.1 MRAD	10 MRAD	36 MRAD	36 MRAD	40 to Infinity
RZR-52005		EBR-2B MOA							¼ MOA	25 MOA	125 MOA	125 MOA	
RAZOR® HD LH™ RIFLESCOPES <i>(Hunting pg. 4-5)</i>													
RZR-1589	3-15 x 42	G4 BDC MOA	16.5 oz	13.5"	3.8"	35.8 - 7.1'	1"	Capped	¼ MOA	15 MOA	55 MOA	55 MOA	20 to Infinity
RZR-1572		HSR-4 MOA											
RZR-1565	2-10 x 40	G4 BDC MOA	15.4 oz	12.5"		56.2 - 10.8'	1"				90 MOA	90 MOA	100
RZR-1558		HSR-4 MOA											
RZR-6638	1.5-8 x 32	G4 BDC MOA	13.4 oz	11.0"		72.2 - 13.2'	1"				110 MOA	110 MOA	100

VISIT: www.VortexOptics.com for more detailed information on specs or reticles.

SKU	MAGNIFICATION X OBJECTIVE LENS	RETICLE OPTIONS	WEIGHT	LENGTH	EYE RELIEF (MAX POWER)	FIELD OF VIEW @ 100 YARDS	TUBE SIZE	TURRET STYLE	ADJUSTMENT GRADUATION	TRAVEL PER ROTATION	ELEVATION ADJUSTMENT	WINDAGE ADJUSTMENT	PARALLAX (YARDS)
GOLDEN EAGLE® HD RIFLESCOPES (Tactical pg. 16-19)													
TCS-1503	15-60 x 52	EBR-1 MOA	29.7 oz	16.1"	3.9"	6.3 - 1.7'	30mm	Tall Target	1/8 MOA	10 MOA	55 MOA	45 MOA	15 to Infinity
TCS-1501		SCR-1 MOA											
VIPER® PST™ GEN II RIFLESCOPES (Tactical pg. 20-23)													
PST-5258	5-25 x 50 FFP	EBR-2C MRAD	31.2 oz	16.0"	3.4"	24.1 - 4.8'			.1 MRAD	10 MRAD	20 MRAD	10 MRAD	25 to Infinity
PST-5255		EBR-2C MOA							¼ MOA	25 MOA	70 MOA	35 MOA	
PST-5251	5-25 x 50	EBR-4 MOA	28.1 oz	14.3"	41.2 - 8.6'	30mm	Tactical	¼ MOA	25 MOA	75 MRAD	40 MOA		
PST-3158	3-15 x 44 FFP	EBR-2C MRAD											
PST-3155		EBR-2C MOA											
PST-3151	3-15 x 44	EBR-4 MOA	26.3 oz	12.75"	3.2"	58.3 - 11.7'			.1 MRAD	10 MRAD	26 MRAD	26 MRAD	
PST-2105	2-10 x 32 FFP	EBR-4 MRAD							¼ MOA	25 MOA	90 MOA	90 MOA	
PST-2101		EBR-4 MOA							.2 MRAD	16 MRAD	46 MRAD	46 MRAD	
PST-1607	1-6 x 24	VMR-2 MRAD		22.7 oz	10.9"	3.8"	112.5 - 18.8'			½ MOA	40 MOA	160 MOA	160 MOA
PST-1605		VMR-2 MOA											
VIPER® HST™ RIFLESCOPES (Tactical pg. 24-27)													
VHS-4310	6-24 x 50	VMR-1 MRAD	22.6 oz	15.5"	4.0"	17.8 - 5.1'	30mm	Tactical	.1 MRAD	5 MRAD	19 MRAD	19 MRAD	50 to Infinity
VHS-4325		VMR-1 MO A							¼ MOA	12 MOA	65 MOA	65 MOA	
VHS-4308	4-16 x 44	VMR-1 MRAD	20.8 oz	13.7"	27.4 - 7.4'			.1 MRAD	5 MRAD	21 MRAD	21 MRAD		
VHS-4309		VMR-1 MOA						¼ MOA	12 MOA	75 MOA	75 MOA		
VIPER® HSLR™ RIFLESCOPES (Hunting pg. 6-7)													
VHS-4315-LR	6-24 x 50 FFP	XLR MOA	22.4 oz	15.5"	4.0"	17.8 - 5.1'	30mm	Capped Windage Tactical Elevation	¼ MOA Windage, ½ MOA Elevation	12 MOA Windage, 24 MOA Elevation	65 MOA	42 MOA	50 to Infinity
VHS-4307-LR	4-16 x 50	Dead-Hold BDC	21.4 oz	13.7"		27.4 - 7.4'		Capped Windage Tactical Elevation	75 MOA	50 MOA			
VIPER® HS™ RIFLESCOPES (Hunting pg. 6-7)													
VHS-4307	4-16 x 50	Dead-Hold BDC	20.4 oz	13.7"	4.0"	27.4 - 7.4'	30mm	Capped	¼ MOA	12 MOA	50 MOA	50 MOA	50 to Infinity
VHS-4305	4-16 x 44		18.4 oz										
VHS-4303	2.5-10 x 44		16.5 oz	12.0"		47.0 - 10.9'					86 MOA	86 MOA	
VIPER® RIFLESCOPES (Hunting pg. 8-9)													
VPR-M-06MD	6.5-20 x 50 PA	Mil-Dot	21.6 oz	14.4"	3.1"	17.4 - 6.2'	30mm	Tall Capped	¼ MRAD	12 MRAD	65 MRAD	65 MRAD	50 to Infinity
VPR-M-06BDC		Dead-Hold BDC							¼ MOA	12 MOA	65 MOA	65 MOA	
STRIKE EAGLE® RIFLESCOPES (Tactical pg. 28-31)													
SE-1624-1	1-6 x 24	AR-BDC	17.6 oz	10.5"	3.5"	116.5 - 19.2'	30mm	Capped	1/2 MOA	40 MOA	140 MOA	140 MOA	100

VISIT: www.VortexOptics.com for more detailed information on specs or reticles.

SKU	Magnification X Objective Lens	Reticle Options	Weight	Length	Eye Relief (Max Power)	Field of View @ 100 Yards	Tube Size	Turret Style	Adjustment Graduation	Travel Per Rotation	Elevation Adjustment	Windage Adjustment	Parallax (Yards)
DIAMONDBACK® TACTICAL RIFLESCOPES (Tactical pg. 32-35)													
DBK-10025	4-12 x 40	VMR-1	16.2 oz	14.2"	3.9"	23.6 - 7.9'	1"	Tactical	¼ MOA	12 MOA	60 MOA	60 MOA	100
DBK-10023	3-9 x 40		15.9 oz			33.7 - 11.3'					86 MOA	86 MOA	
DIAMONDBACK® HP™ RIFLESCOPES (Hunting pg. 10-11)													
DBK-10019	4-16 x 42	Dead-Hold BDC	18.0 oz	12.5"	4.0"	28.8 - 6.1'	1"	Capped	¼ MOA	15 MOA	80 MOA	80 MOA	30 to Infinity
DBK-10015	3-12 x 42										90 MOA	90 MOA	
DIAMONDBACK® RIFLESCOPES (Hunting pg. 10-11)													
DBK-04-BDC	4-12 x 40	Dead-Hold BDC	14.6 oz	12.0"	3.1"	32.4 - 11.3'	1"	Capped	¼ MOA	15 MOA	60 MOA	60 MOA	100
DBK-M-04P			16.2 oz								65 MOA	65 MOA	
DBK-03-BDC	3.5-10 x 50	Dead-Hold BDC	16.2 oz	12.5"	35.8 - 13.5'	70 MOA					70 MOA		
DBK-M-01P	3-9 x 40	V-Plex	14.4 oz	11.7"	3.3"	44.6 - 14.8'					100 MOA	100 MOA	
DBK-01-BDC		Dead-Hold BDC									125 MOA	125 MOA	
DBK-RIM	2-7 x 35 Rimfire	V-Plex (50yd)	14.2 oz	11.6"	3.1"	64.3 - 19.3'	125 MOA	125 MOA					
DBK-08-BDC	1.75-5 x 32	Dead-Hold BDC	12.8 oz	10.2"	3.5"	68.3 - 23.1'							
CROSSFIRE® II RIFLESCOPES (Hunting pg. 12-15)													
CF2-31045	6-24 x 50 AO	Dead-Hold BDC	23.6 oz	14.5"	4.0"	17.3 - 4.4'	30mm	Capped	¼ MOA	15 MOA	40 MOA	40 MOA	10 to Infinity
CF2-31039	4-16 x 50 AO			14.2"	3.7"	25.3 - 7.0'					50 MOA	50 MOA	25 to Infinity
CF2-31049	3-12 x 56 Hog Hunter	V-Brite®	21.1 oz	14.3"	3.5"	36.7 - 9.2'					60 MOA	60 MOA	10 to Infinity
CF2-31037	1-4 x 24		16.0 oz	9.8"	4.0"	96.1 - 24.1'					100 MOA	100 MOA	100
CF2-31033	6-18 x 44 AO	Dead-Hold BDC	19.6 oz	13.5"	3.7"	15.2 - 5.3'	1"	Capped	¼ MOA	15 MOA	50 MOA	50 MOA	10 to Infinity
CF2-31029		V-Brite®	20.6 oz										
CF2-31023	4-12 x 50 AO	Dead-Hold BDC	19.2 oz	13.6"	3.9"	24.7 - 8.4'							
CF2-31019	4-12 x 40 AO		19.2 oz	13.6"									
CF2-31013	4-12 x 44	V-Plex	17.2 oz	13.1"	3.8"	34.1 - 12.9'							
CF2-31015		Dead-Hold BDC											
CF2-31011	3-9 x 50	Dead-Hold BDC	18.4 oz	12.7"	3.8"	34.1 - 12.6'							
CF2-31027		V-Brite®	18.6 oz										
CF2-31005	3-9 x 40	V-Plex	15.0 oz	12.0"	3.8"	34.1 - 12.6'					60 MOA	60 MOA	
CF2-31007		Dead-Hold BDC	16.2 oz										
CF2-31025	V-Brite®	16.2 oz											
CF2-31001	2-7 x 32	V-Plex	14.3 oz	11.3"	3.9"	42.0 - 12.6'	50						
CF2-31001R	2-7 x 32 Rimfire		12.0 oz	10.5"	9.45"	18.3 - 5.2'							
CF2-31002	2-7 x 32 Scout		14.3 oz	11.3"	3.9"	42.0 - 12.6'		100					
CF2-31003	2-7 x 32	Dead-Hold BDC	14.3 oz	11.3"	3.9"	42.0 - 12.6'							

VISIT: www.VortexOptics.com for more detailed information on specs or reticles.

Unlimited. Unconditional. Lifetime Warranty.



BEST WARRANTY IN THE BUSINESS

Because we know life happens - but don't just take our word for it, check out the true stories and hear what people are saying. » www.vortexoptics.com

NOTE: The VIP Warranty does not cover loss, theft, deliberate damage or cosmetic damage that does not hinder the performance of the product.

HOUSE FIRE

☒ COVERED





HUNT IT, SHOOT IT,
LIVE IT, WEAR IT
YOU ARE THE #VORTEXNATION



LOOK GOOD. FEEL GOOD.
GEAR UP.

Vortex® Gear—the official gear of people who like to hunt what they eat, shoot guns for fun, and dream of vacations at 10,000 feet. People who could live with nothing but a good knife, some paracord, their weapon of choice, and quality optics. In other words, the official gear of YOU!

www.VortexGear.com

